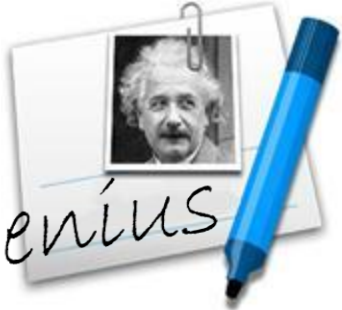
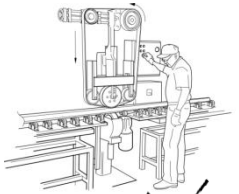




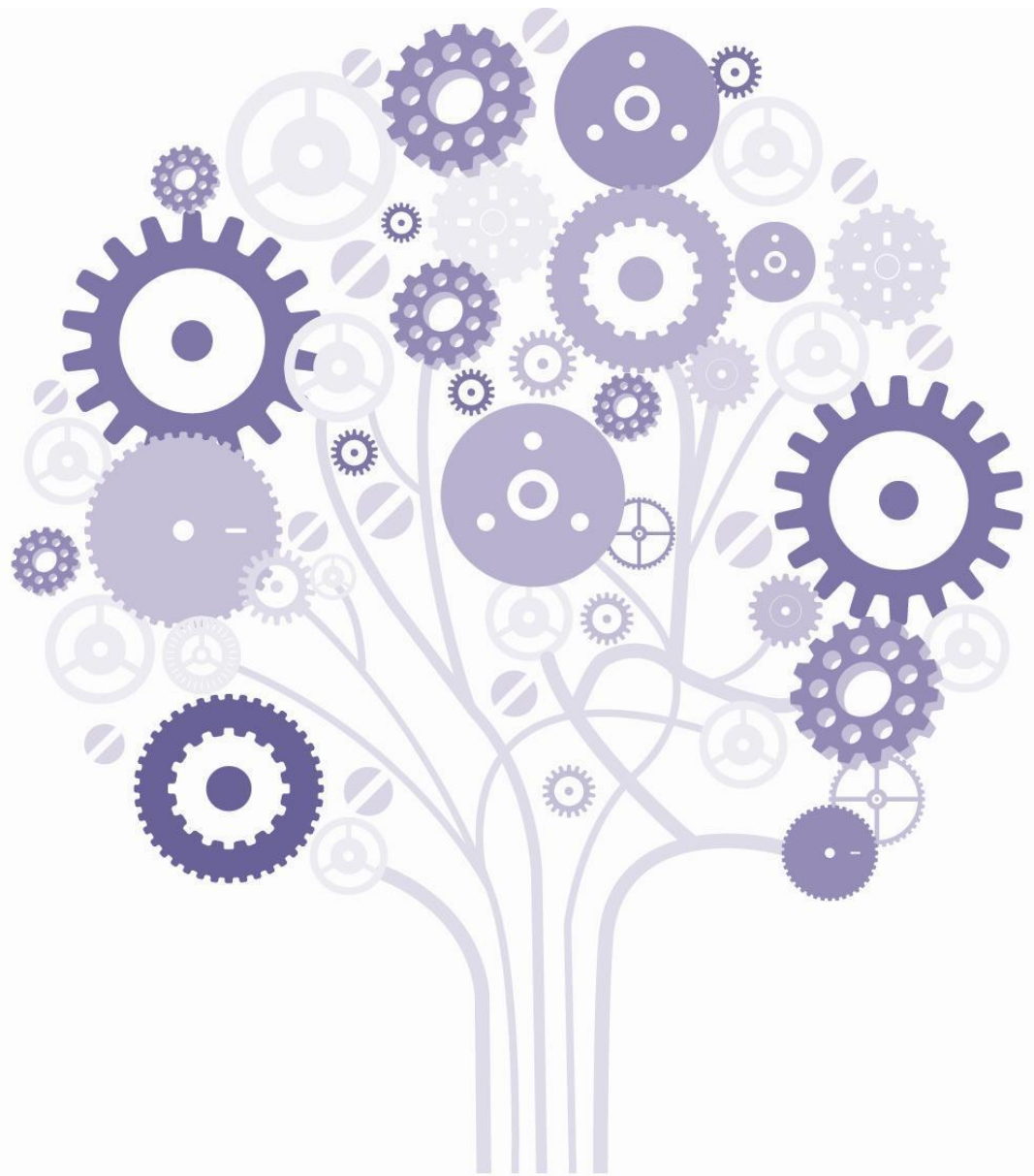
GEXMA



EX



Machina



CONCRETEZZA ALLE VOSTRE IDEE



GEXMA

## CHI SIAMO

Team di tecnici ed ingegneri che operano nel settore industriale da diversi anni.





GEXMA

Analisi e messa in sicurezza impianti produttivi

Revamping linee produttive

Automazioni di processi industriali

**GEXMA offre**

Macchine ed attrezzature speciali

Redigere manuali tecnici

Soluzioni per il trasporto e lo stoccaggio





GEXMA



# PORTFOLIO...

---



GEXMA

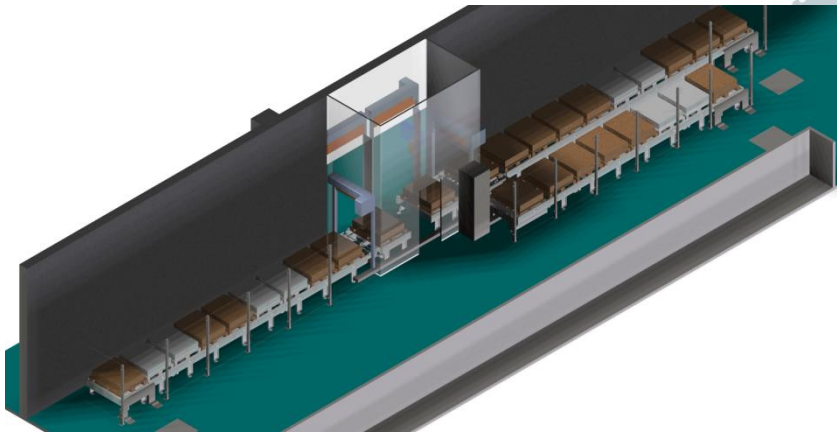
## Linee di trasporto e movimentazione





GEXMA

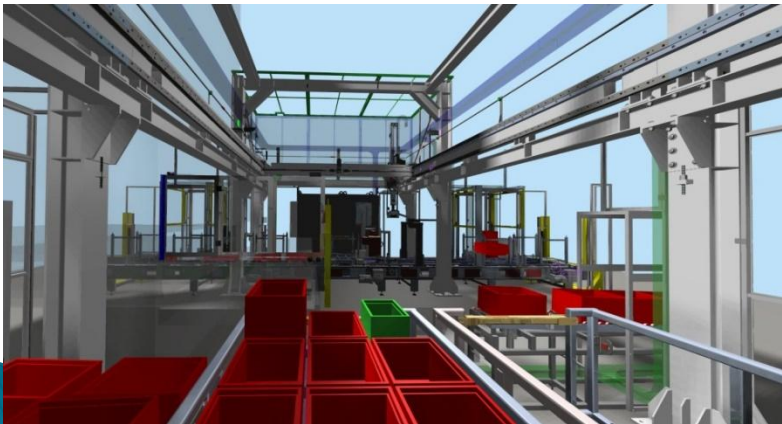
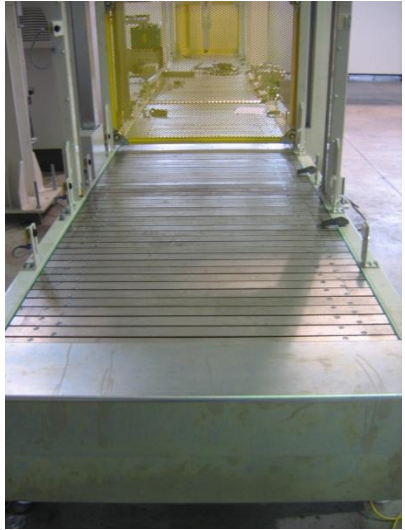
# Sistemi movimentazione pallet





GEXMA

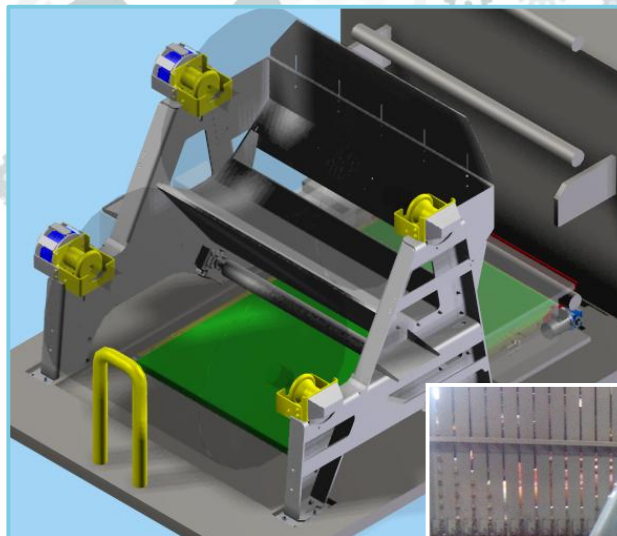
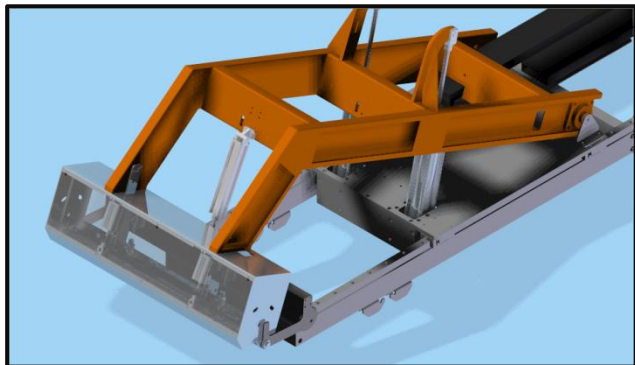
# Magazzino automatico





GEXMA

## Macchine ed attrezzature speciali







GEXMA

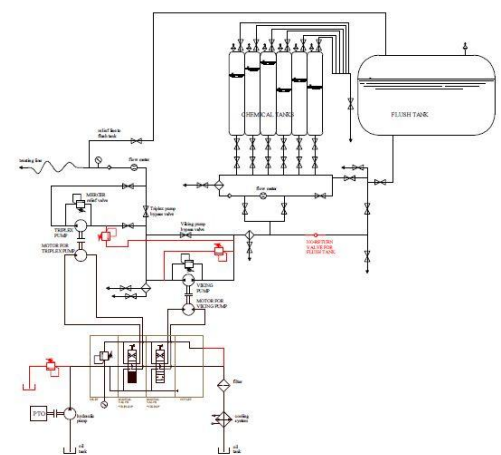
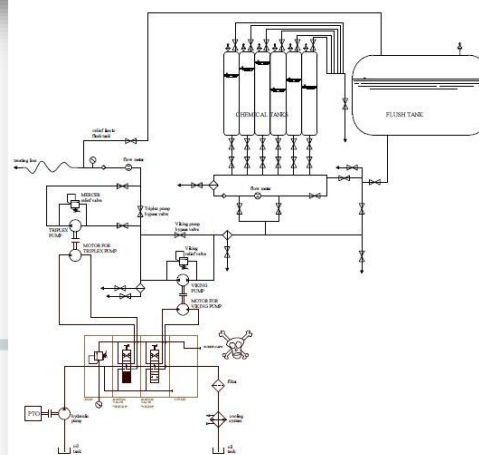
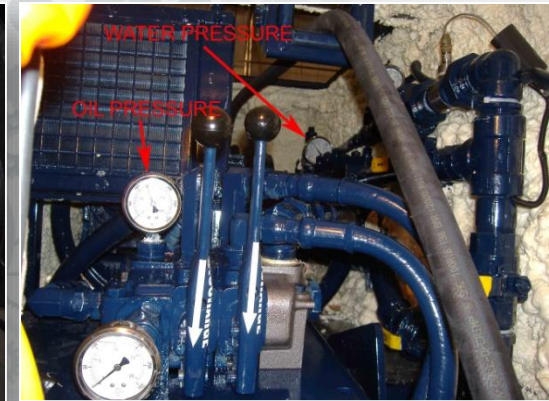
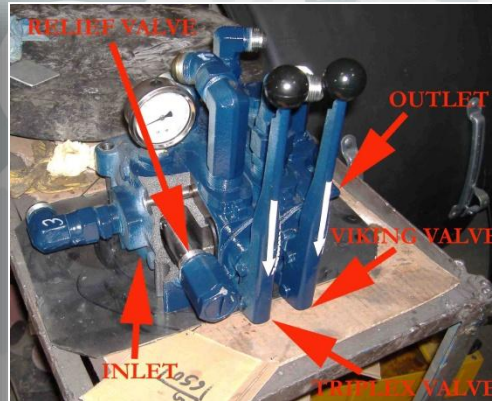
## Macchina idraulica per trancio e pesatura blocchi in gomma





GEXMA

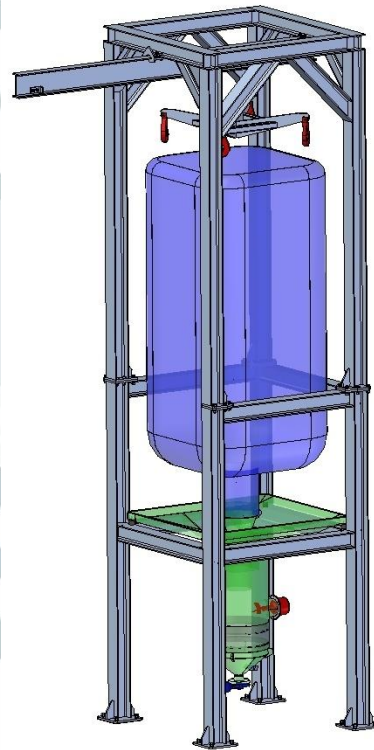
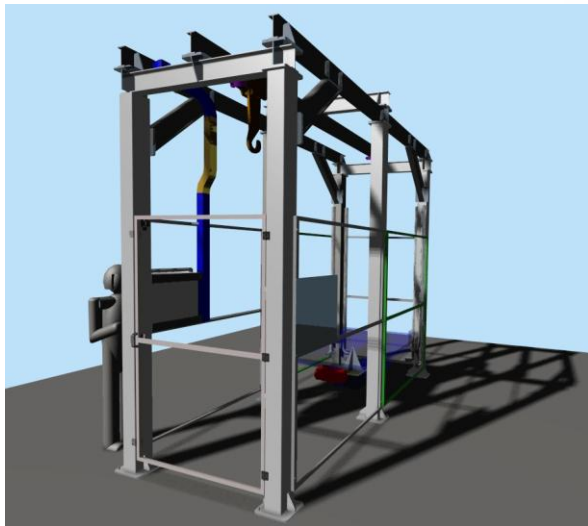
# Impianti idraulici





GEXMA

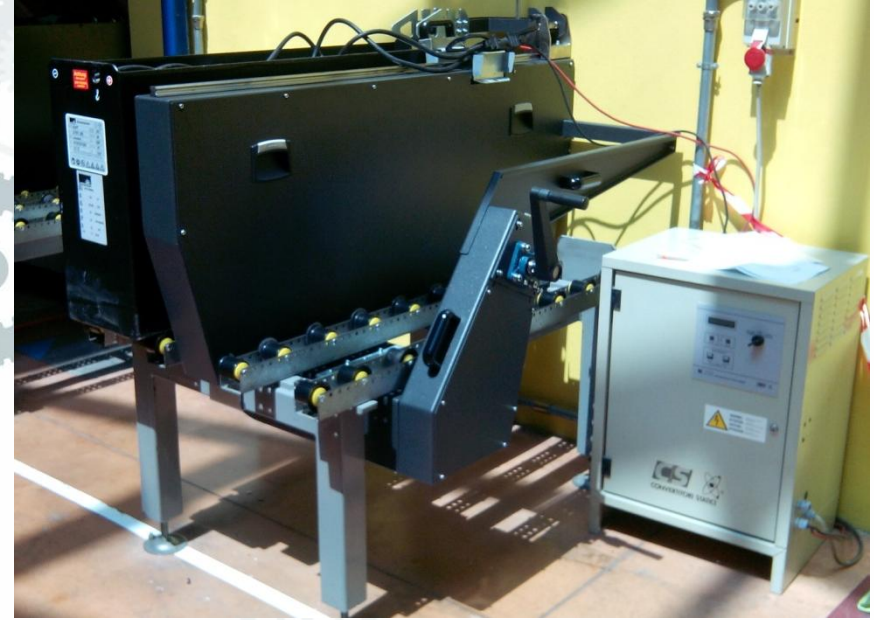
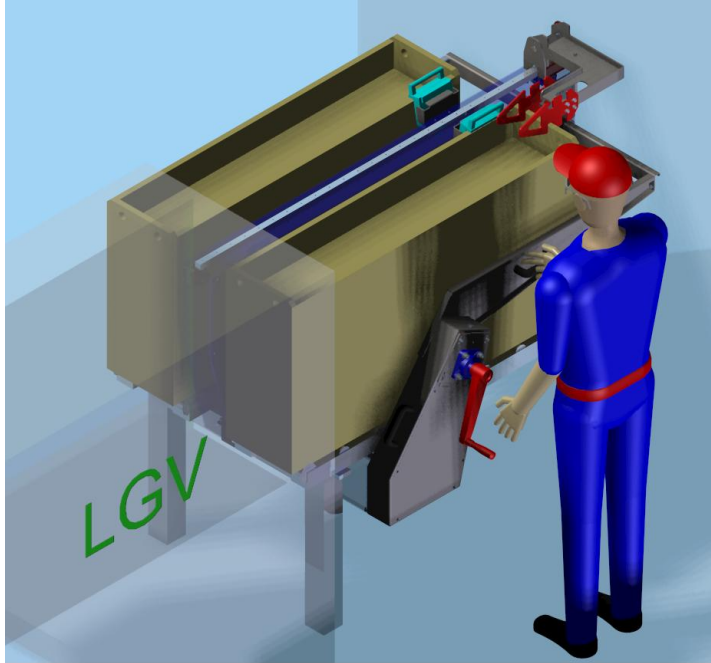
## Movimentazione sacchi "big bag"





GEXMA

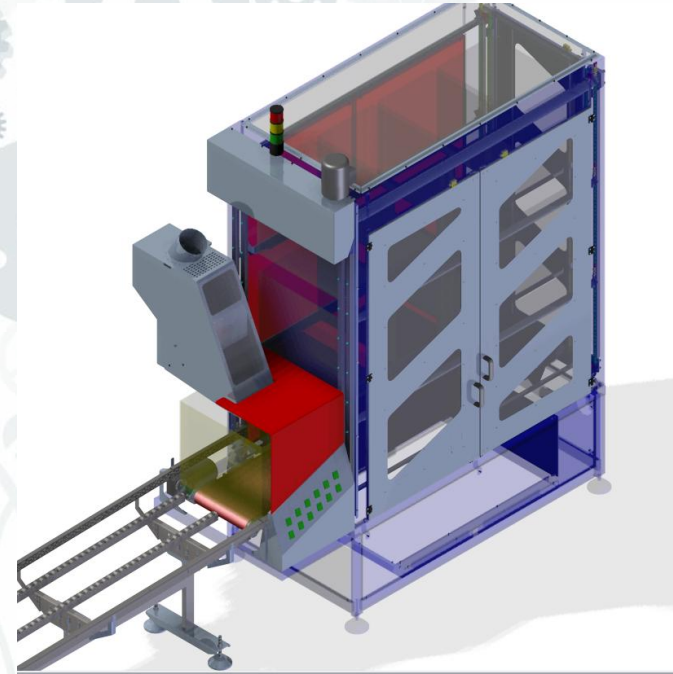
# Sistema movimentazione batterie LGV





GEXMA

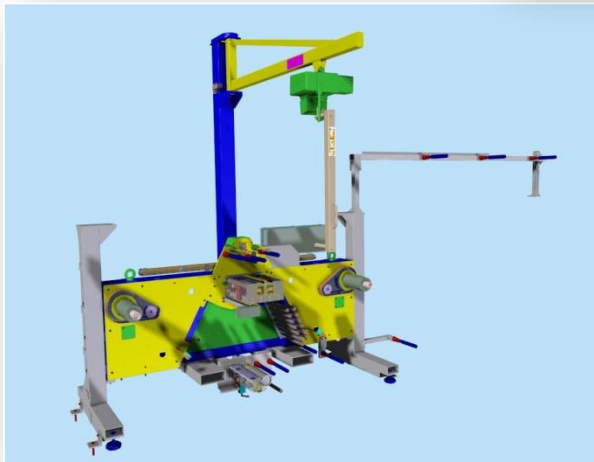
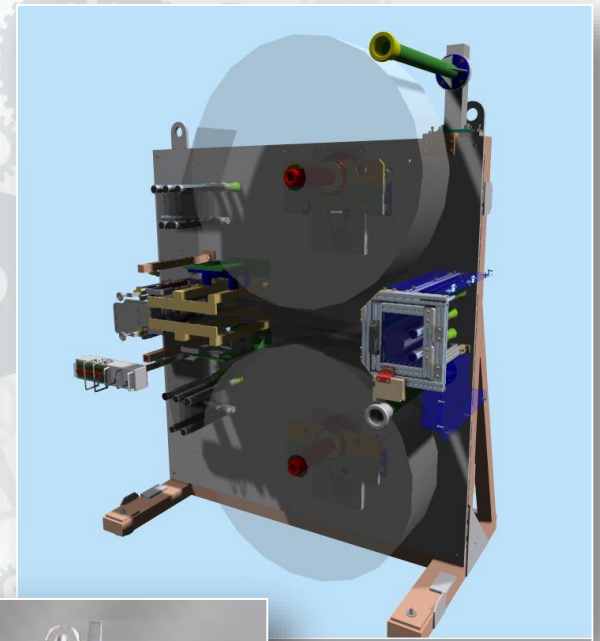
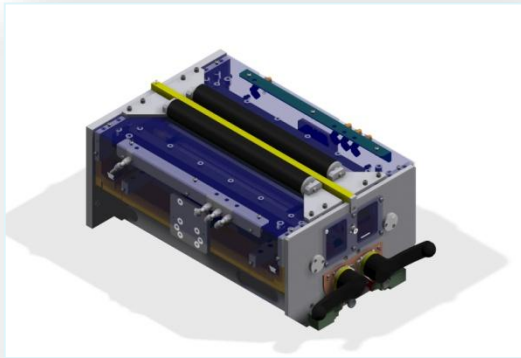
# Cambiacartoni automatizzata





GEXMA

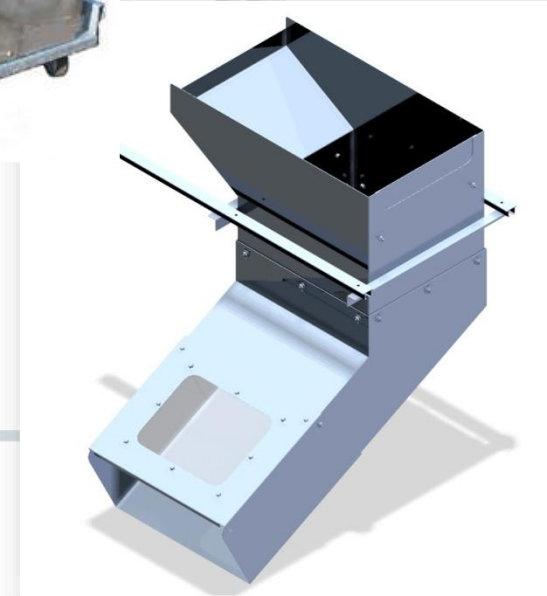
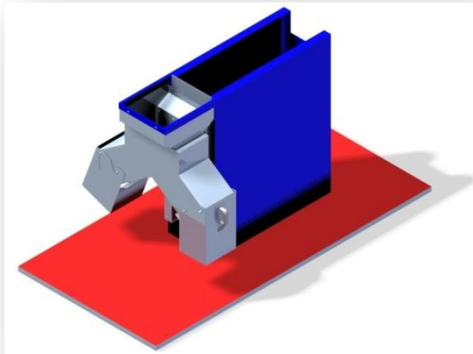
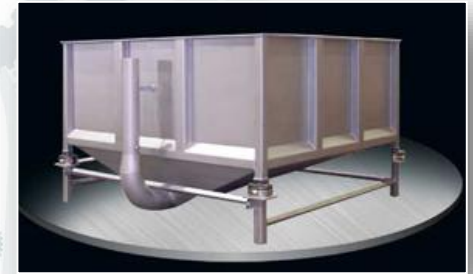
# Svolgitori / Avvolgitori





GEXMA

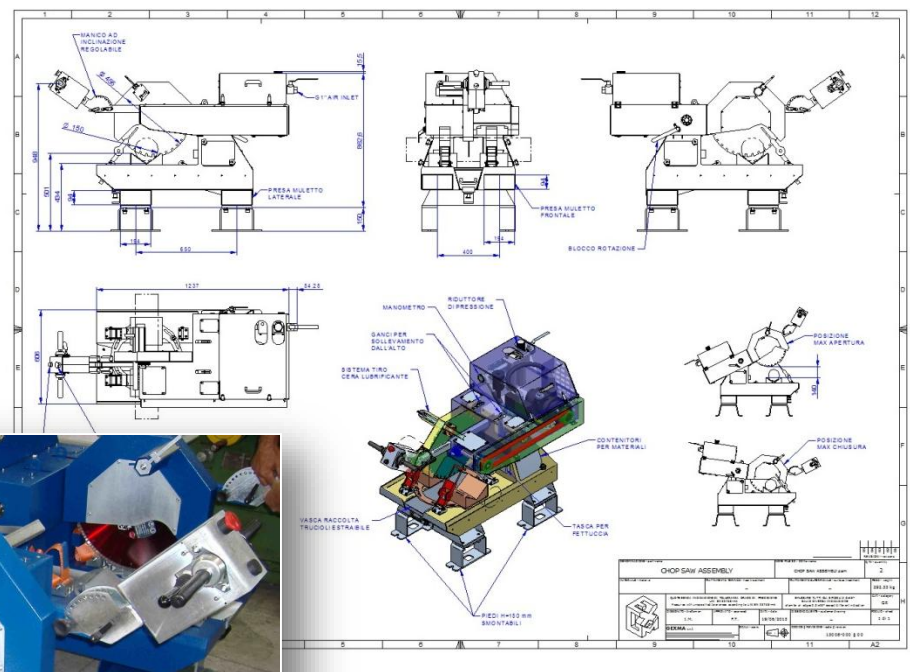
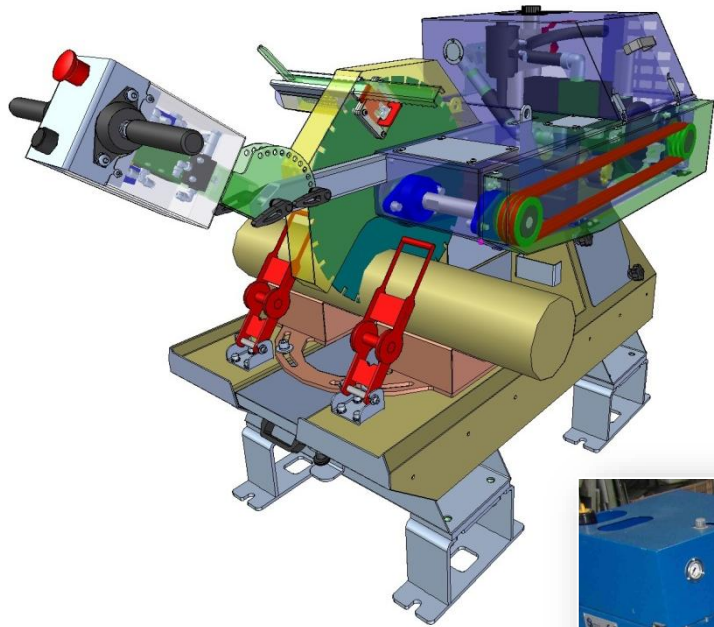
# Tramogge inox





GEXMA

# Sezionatrice a disco ad alimentazione pneumatica

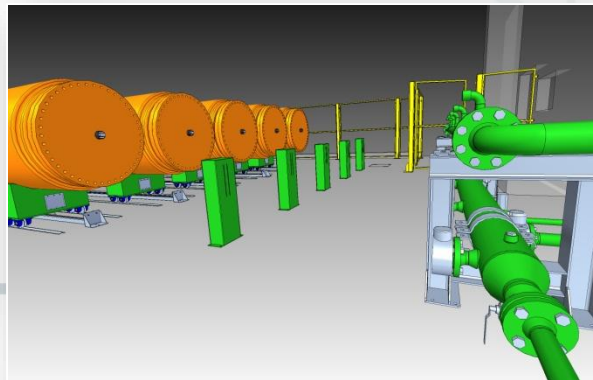
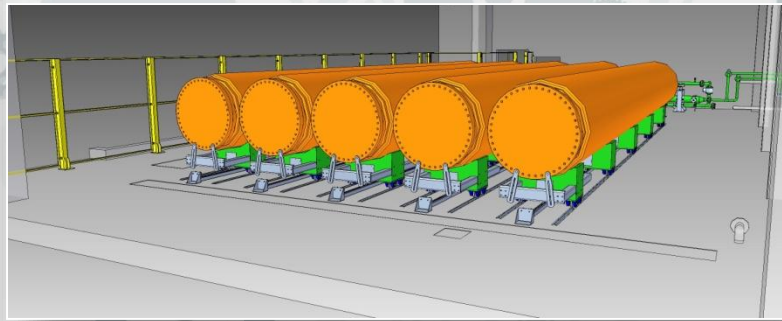






GEXMA

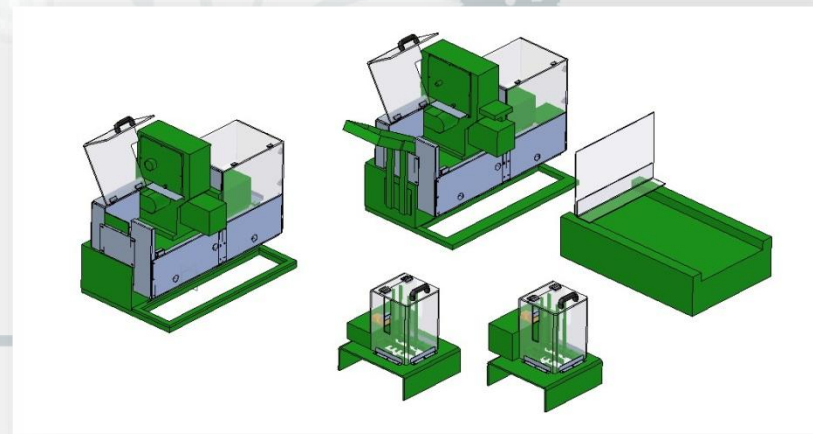
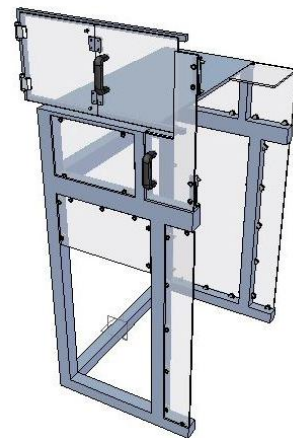
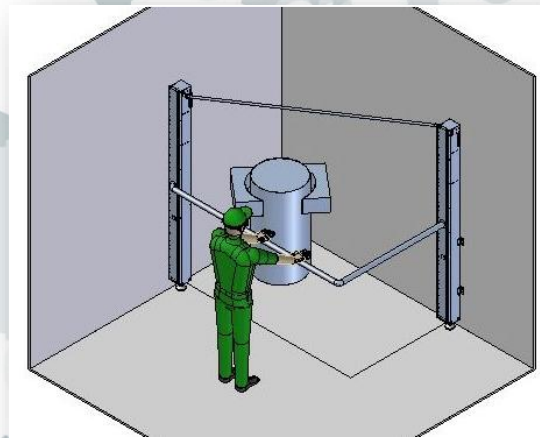
# Impianto per test idraulico per tubi di grande diametro con misurazione allungamento/torsione tubi





GEXMA

# Protezioni e sicurezza macchine

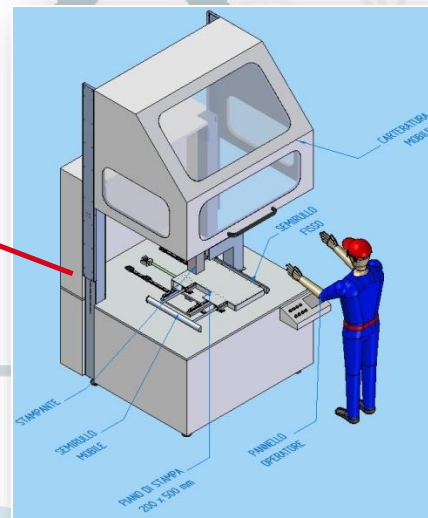
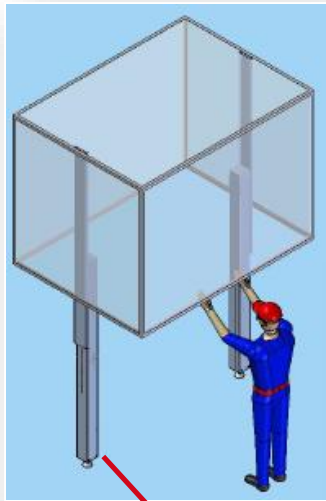




GEXMA

# Protezioni e sicurezza macchine con sistema a contrappeso INOX

Applicazione del sistema in  
ambito farmaceutico





GEXMA

A large, light gray graphic of a tree where the branches and leaves are composed of various sized gears and mechanical parts, creating a complex, industrial-looking silhouette.

# REPARTO PRODUZIONE...

---



# GEXMA



## Area di lavoro

- Mq. 800



## Tornio manuale ZMM 36P/115

- Passaggio barra  $\varnothing$  115 mm.
- $\varnothing$  Max. di tornitura 900 mm.
- $\varnothing$  Max. tornibile sul carro trasversale 730 mm.
- Lunghezza Max. lavorazione 2000 mm.



GEXMA



## Tornio ad autoapprendimento FEL-1760 ENC

- Passaggio barra  $\varnothing$  52 mm.
- $\varnothing$  Max. di tornitura 435 mm.
- $\varnothing$  Max. tornibile sul carro trasversale 277 mm.
- Lunghezza Max. lavorazione 1500 mm.



## Tornio manuale Misal KV 13

- Passaggio barra  $\varnothing$  35
- $\varnothing$  Max. di tornitura 200 mm.
- Lunghezza Max. lavorazione 1500 mm.



GEXMA



## Fresatrice multifunzione Knuth MF5VKP

- Corse assi X \* Y \* Z 800x390x380



## Centro di lavoro a mandrino verticale Mazak VCN-530C + 4°asse continuo

- Corse assi X \* Y \* Z 1050x530x510
- Asse rotativo continuo Kitagawa MR250
- Peso Max. lavorabile Kg. 1200



GEXMA



## Attrezzature varie

- Banco di riscontro e micrometri
- Reparto saldatura Tig, Mig ed elettrodo
- Trapano a colonna
- Smerigliatrice
- Pressa idraulica
- Seghe a nastro e circolari
- Calandra profili





GEXMA

Le nostre realizzazioni sono in...

sanofi aventis

Because health matters



P&G



Bristol-Myers Squibb





GEXMA

## CONTATTI:

GEXMA S.r.l.

P.IVA 01822260665

[www.gexma.it](http://www.gexma.it)

Sede legale ed operativa:

via Riccio 15

C/o parco Brecciarola

66100 Chieti ITALY

Tel : +39 0871 684339

[info@gexma.it](mailto:info@gexma.it)



# Grazie per l'attenzione

CONCRETEZZA ALLE VOSTRE IDEE